

TECHNICAL DATA - ENGLISH

# PANBETON® SCAFFOLDED 2MM

DESIGN : STUDIO LCDA

DIMENSIONS : 2600 x 1200 x 17,5 mm | 102.36" x 47.24" x 0.69"

---

## CONCRETE LCDA

8 rue Copernic 49240 Avrillé - FRANCE

T. +33 (0) 2 41 33 99 10 F. +33 (0) 9 70 32 65 61

[CONTACT@CONCRETE-BETON.COM](mailto:CONTACT@CONCRETE-BETON.COM)

[WWW.CONCRETE-BETON.COM](http://WWW.CONCRETE-BETON.COM)

## PANBETON®

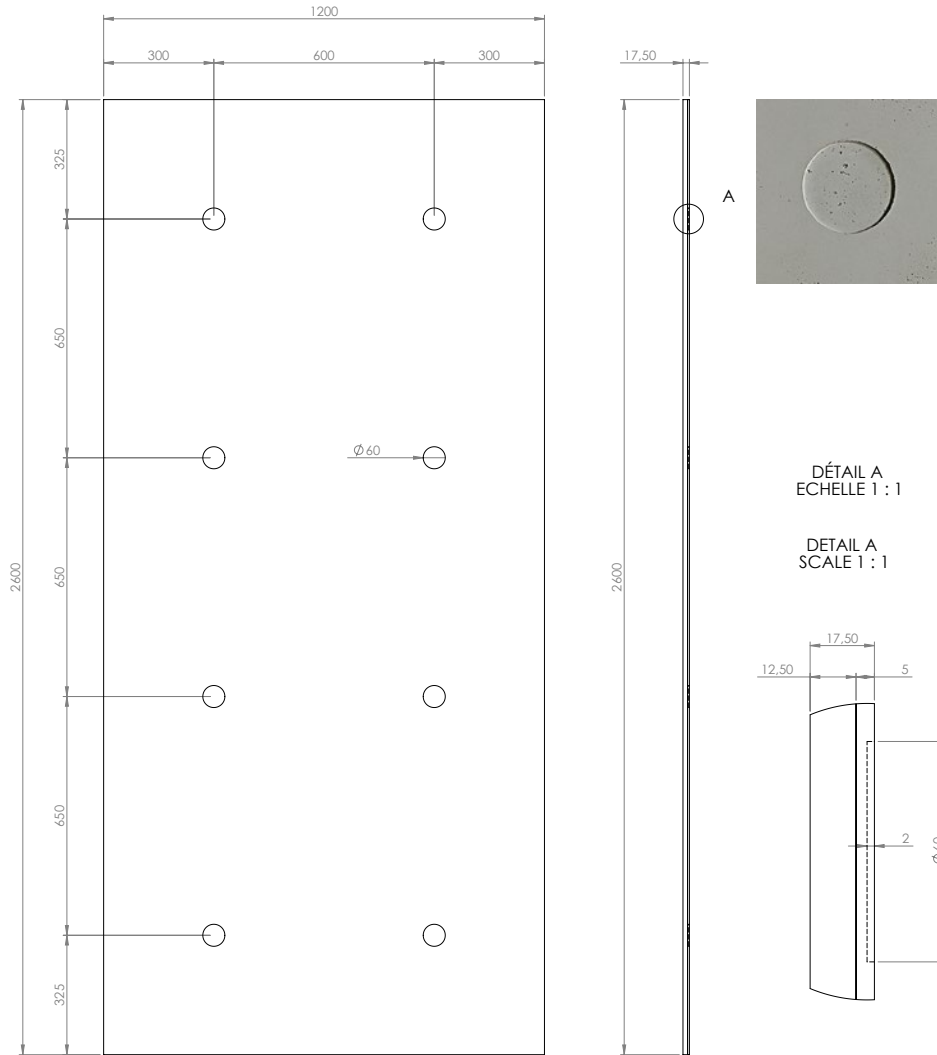
### ULTRA-LIGHTWEIGHT CONCRETE CLADDING

Panbeton® is a unique technology of ultra-lightweight concrete cladding. These slabs are quick and easy to install for wall and ceiling covering. It is the ideal covering to dress up a space with concrete.

- > A large lightweight and easy to cut slab.
- > Front made of genuine raw concrete
- > A simple attachment system
- > Quick installation with little handling
- > Endless customisation possibilities.

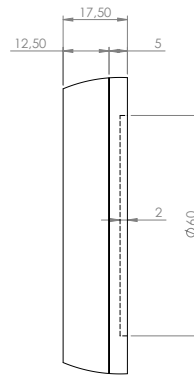


# TECHNICAL SHEET (MM)



DÉTAIL A  
ECHELLE 1 : 1

DETAIL A  
SCALE 1 : 1



**INFORMATIONS TECHNIQUES :**

Matière : Béton fibré ultra haute performance  
 Poids : 40 Kg  
 Tolérance générale +/- 3 mm

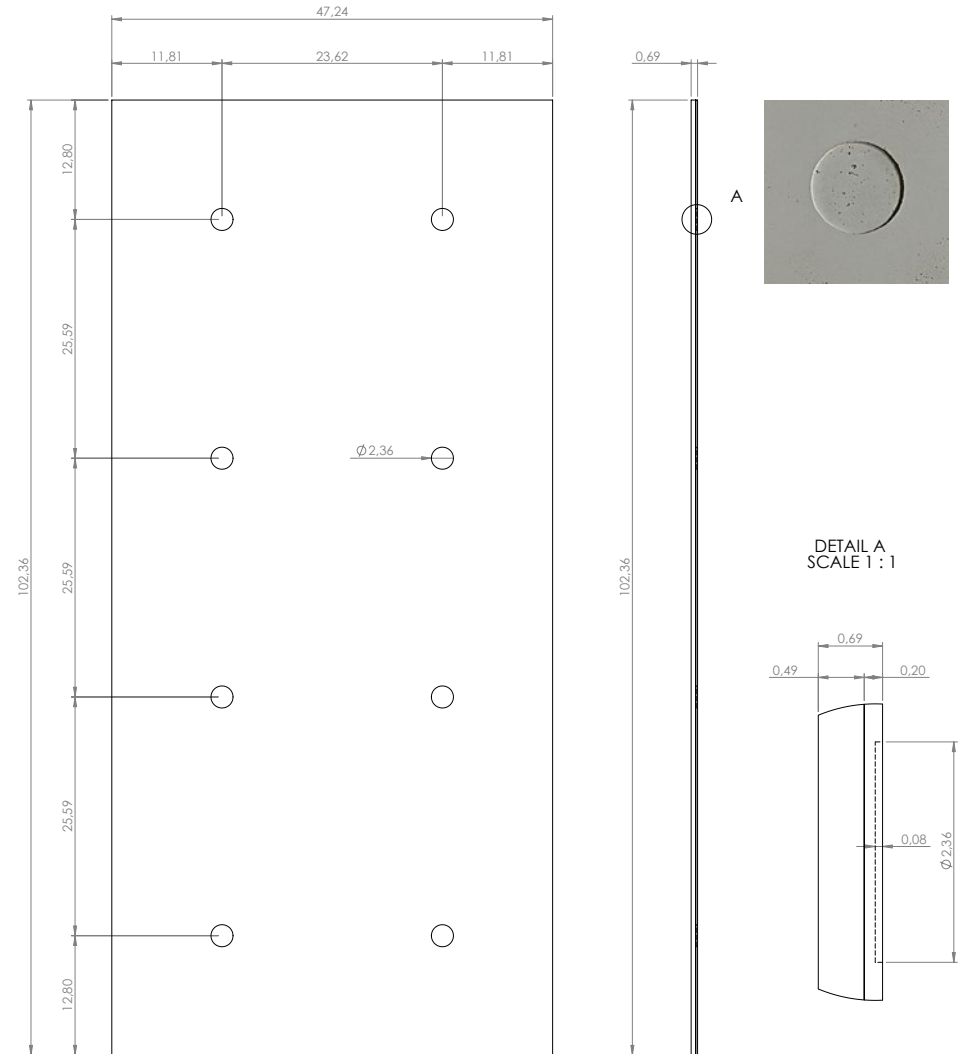
**TECHNICAL INFORMATIONS :**

Material : Fiber High performance concrete  
 Weight : 40 kg  
 General tolerance : +/- 3 mm

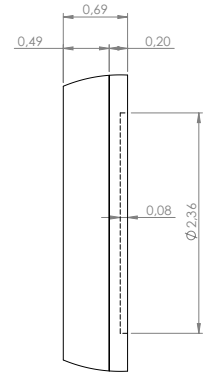
<b>CONCRETE LCDA</b>			8 rue Copemic 49240 Avrillé www.concrete-beton.com
Date	Nom	N°plan	Echelle : Ep :
			PANBETON @ BANCHE 2 mm
			PANBETON @ SCAFFOLDED 2mm
			2600 X 1200 X 17,5
			STUDIO LCDA
Surface : m²	Bon pour accord :		
Units : mm	Agreement for production :		
Units : mm	FEUILLE 1 SUR 1		
Poids : Kg	SHEET 1 OF 1		
Weight : kg			

# TECHNICAL SHEET (INCH)

EN



DETAIL A  
SCALE 1 : 1










**TECHNICAL INFORMATIONS :**

Material : Fiber High performance concrete  
 Weight : 88 LBS  
 General tolerance : +/- 0.12 in

<b>CONCRETE LCDA</b>			8 rue Copemic 49240 Avrillé www.concrete-beton.com
Date	Name	N°plan	Scale : Ep :
			PANBETON @ SCAFFOLDED 2mm
			102.36 X 47.24 X 0.69
			STUDIO LCDA
Surface :	Agreement for production :		
Units : in			
Weight : LBS	SHEET 1 OF 1		

Ce dessin est la propriété de la société LCDA. Toute reproduction sans notre accord préalable est interdite.  
 This drawing is the property of LCDA. Reproduction without our permission is prohibited.

	<b>DIMENSIONS</b>	2600 x 1200 mm   102.36" x 47.24" (General tolerance +/- 3 mm   0.12")
	<b>ORTHOGONALITY</b>	+ /- 1.0 %
	<b>SURFACE AREA</b>	+ /- 1.0 %
	<b>THICKNESS</b>	17,5 mm   0.69"
	<b>WEIGHT</b>	40 Kg   88 lbs (+/- 20 %)
	<b>WEIGHT PER SQM</b>	12 to 18 kg/m²   25 lbs to 30 lbs /m²
	<b>COMPOSITION</b>	> Fibre-reinforced concrete > Construction panel
	<b>SEALER TREATMENT</b>	As an option (water-borne acrylic base)
	<b>MOUNTING &amp; BONDING</b>	Glue Hybrifix 550 DEN BRAVEN
	<b>SUBSTRATES</b>	Is glued to all substrates (plasterboard, bricks, breeze-blocks, etc.)
	<b>CUTTING</b>	Diamond blade (continuous-rim). outer corner possible, drilling with diamond-coated hole saw...

	<b>FIRE CLASSIFICATION</b>	> Euroclass B-s1, d0  > [OPTION] A2-s1d0 (with specific support : gypsum fiber board)  > ASTM E84 : Class A Smoke index : 0 Flame spread index : 0
	<b>HEAT RESISTANCE</b>	Up to 60°C   Up to 140 °F
	<b>THERMAL SHOCK</b>	Resistant
	<b>LIGHT RESISTANCE</b>	No impact
	<b>VOC CLASSIFICATION</b>	A+
	<b>ACOUSTIC</b>	Neutral
	<b>EXCLUDED</b>	Exterior, floor, shower stall. Not suitable for direct and continuous contact with water.

USE THIS ENTIRE DESCRIPTION TO SPECIFY OUR PRODUCTS.

<b>COMPANY NAME</b>		Concrete LCDA
<b>TECHNICAL DATA</b>	<b>MORTAR</b>	<p>Fibre-Reinforced shrinkage-compensating repair mortar.</p> <p>Non-shrinking mortar composed of sand, special cement, fibres and admixtures.</p> <p><b>Compressive strength:</b> Class R2  <b>Chloride ion content:</b> <math>\leq 0.05\%</math>  <b>Bonding :</b> <math>\geq 0.8</math> MPa</p>
	<b>REINFORCED FIBRE</b>	High Zirconia 17%+ Alkali Resistant Glass Fibre.
	<b>CONSTRUCTION PANEL</b>	Rigid extruded polystyrene foam finished on both sides with a polymer-modified mortar facing, reinforced with a glassfibre mesh fabric.

## COMPOSITION

Slice view



5 MM | 0.19"

12,5 MM | 0.49"

FIBRE-  
REINFORCED  
CONCRETE

CONSTRUCTION  
PANEL



# FINISHES



Light Pitted



Medium Pitted



Heavy Pitted

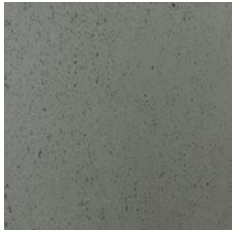
# COLORS



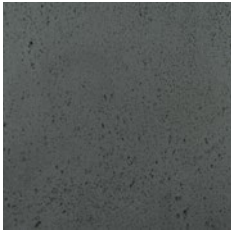
200 - Natural Grey



217 - Slate Grey



216 - Anthracite Grey



209 - Black



402 - White



404 - Stone



205 - Brown



269 - Luzerne



473 - Ouarzazate

# CORNER CUTTING

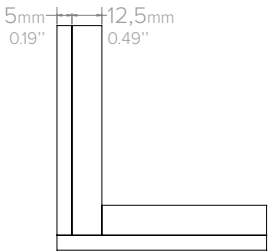
## 1 - BOARD TO BOARD JOIN



Front view



Top view

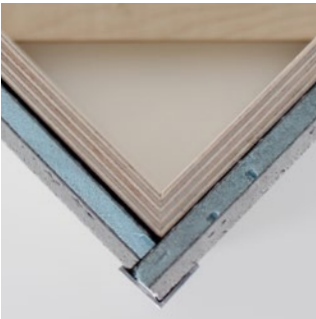


Schema

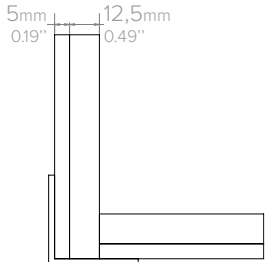
## 3 - TOP CORNER IRON



Front view

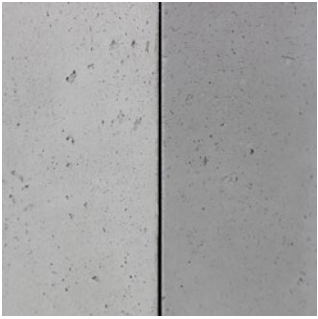


Top view

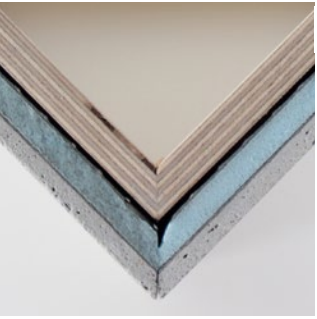


Schema

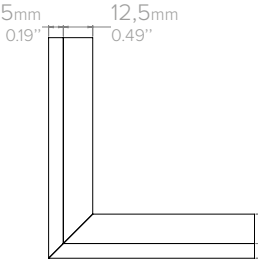
## 2 - OUTER CORNER\*



Front view



Top view

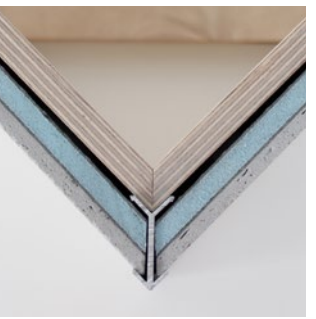


Schema

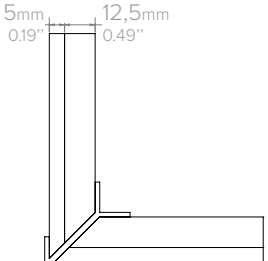
## 4 - IRON CORNER\*



Front view



Top view



Schema

\*45 degree cuts can be made at the Concrete LCDA factory (as an option).



# INSTALLATION TOOLS



PROTECTIVE GLOVES



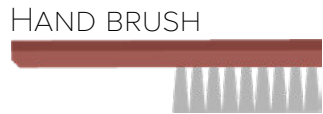
SAFETY HEADPHONES



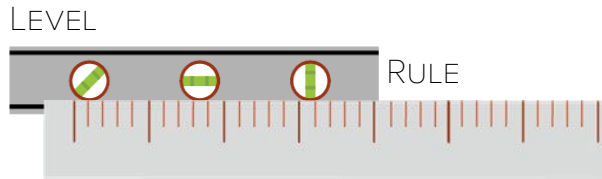
PROTECTIVE GLASSES



DUST MASK



HAND BRUSH

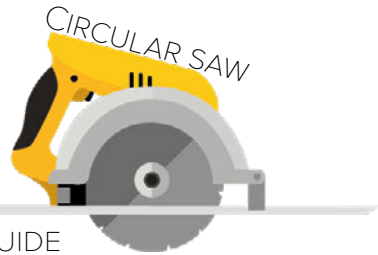


LEVEL

RULE

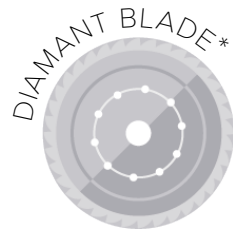


MALLET



CIRCULAR SAW

& GUIDE RAIL



DIAMANT BLADE\*

REDUCER RING\*



\*Available in the cut kit (as an option)

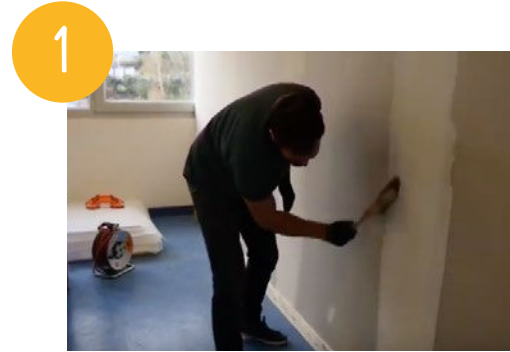


GLUE GUN



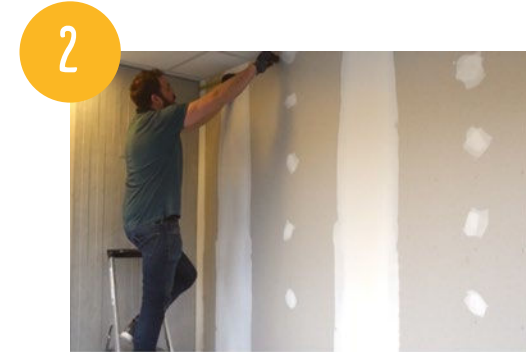
GLUE HYBRIFIX 550 DEN BRAVEN SEALANTS (recommended)

# INSTALLATION STEPS



1

CLEAN THE AREA BEFORE THE INSTALLATION



2

TAKE WALL MEASUREMENTS BEFORE CUTTING THE PANEL



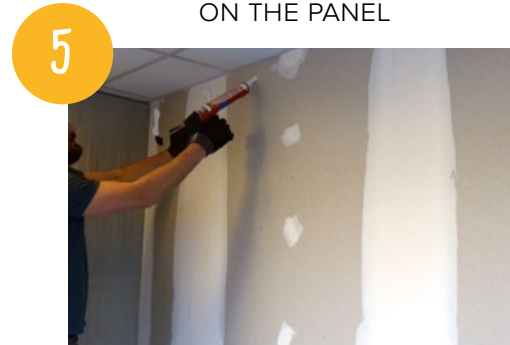
3

COPY YOUR MEASUREMENTS ON THE PANEL



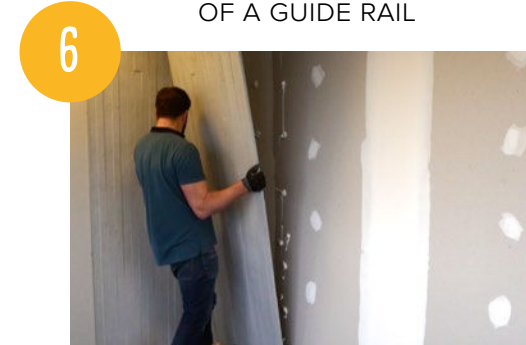
4

CUTTING WITH THE USE OF A GUIDE RAIL



5

APPLY GLUE ON THE WALL (OR ON THE BACK OF THE PANEL)



6

PLACE THE PANEL STARTING WITH THE BOTTOM

INSTALLATION VIDÉOS STEP BY STEP TO SEE

**ON OUR YOUTUBE CHANNEL @CONCRETE LCDA**



> [PANBETON®](#)

> [SLIMBETON®](#)