



TECHNICAL DATA – ENGLISH

## PANBETON® BARBICAN

DESIGN : TERENCE WOODGATE

DIMENSIONS : 2600 x 900 x 20 mm | 102.36" x 35.43" x 0.79"

---

### CONCRETE LCDA

8 rue Copernic 49240 Avrillé - FRANCE

T. +33 (0) 2 41 33 99 10 F. +33 (0) 9 70 32 65 61

[CONTACT@CONCRETE-BETON.COM](mailto:CONTACT@CONCRETE-BETON.COM)

[WWW.CONCRETE-BETON.COM](http://WWW.CONCRETE-BETON.COM)

## PANBETON®

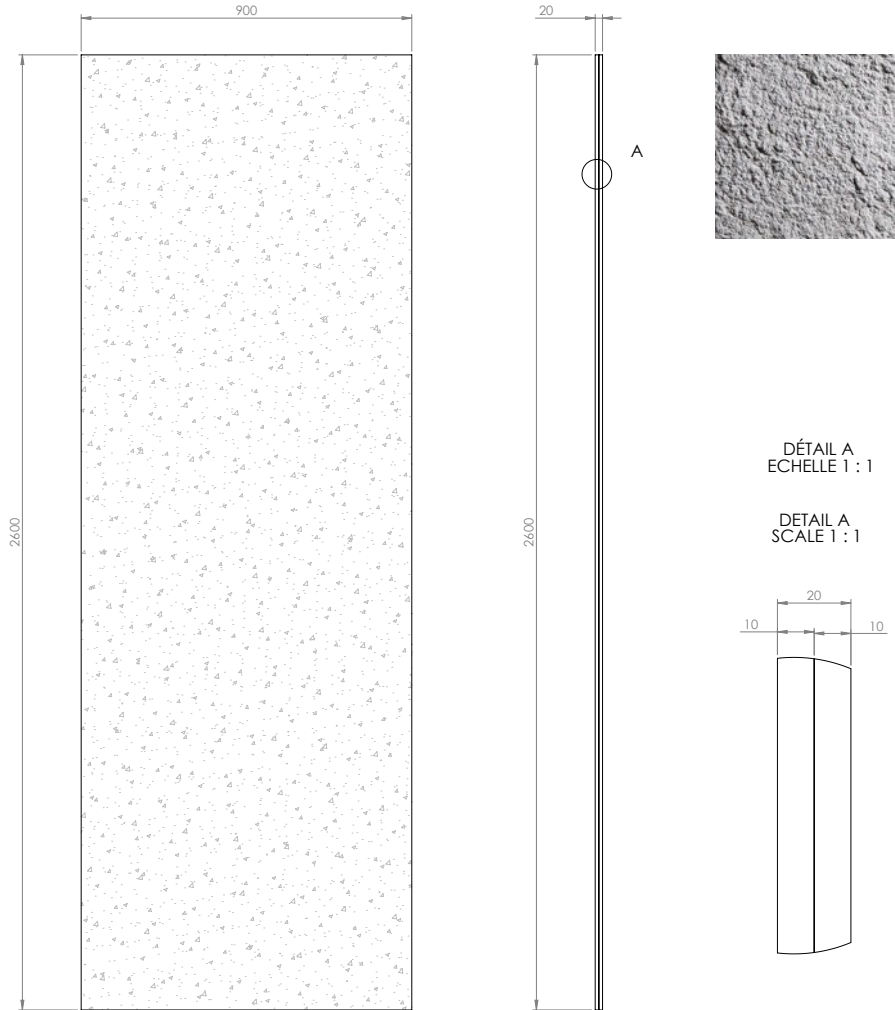
### ULTRA-LIGHTWEIGHT CONCRETE CLADDING

Panbeton® is a unique technology of ultra-lightweight concrete cladding. These slabs are quick and easy to install for wall and ceiling covering. It is the ideal covering to dress up a space with concrete.

- > A large lightweight and easy to cut slab.
- > Front made of genuine raw concrete
- > A simple attachment system
- > Quick installation with little handling
- > Endless customisation possibilities.



# TECHNICAL SHEET (MM)



## INFORMATIONS TECHNIQUES :

Matière : Béton fibré ultra haute performance  
 Poids : 40 Kg  
 Tolérance générale +/- 3 mm

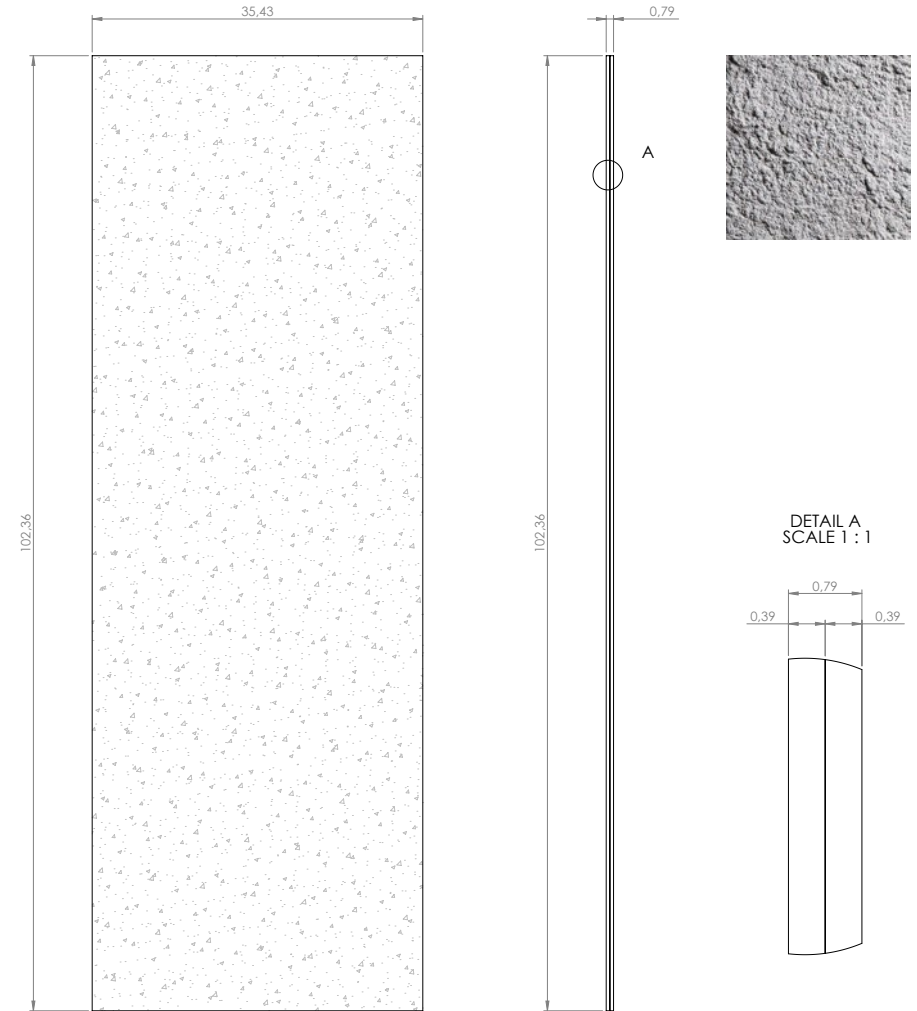
## TECHNICAL INFORMATIONS :

Material : Fiber High performance concrete  
 Weight : 40 kg  
 General tolerance : +/- 3 mm

|                      |     |        |  |
|----------------------|-----|--------|--|
| <b>CONCRETE LCDA</b> |     |        | 8 rue Copernic 49240 Avrillé<br>www.concrete-beton.com |
| Date                 | Nom | N°plan | Echelle :<br>Scale :                                   |
|                      |     |        | Ep :   |
|                      |     |        | PANBETON ® BARBICAN<br>TERENCE WOODGATE                |
|                      |     |        | Bon pour accord :<br>Agreement for production :        |
|                      |     |        | FEUILLE 1 SUR 1<br>SHEET 1 OF 1                        |
| Surface : m²         |     |        |  |
| Unités : mm          |     |        |  |
| Units : mm           |     |        |  |
| Poids : Kg           |     |        |  |
| Weight : kg          |     |        |  |

# TECHNICAL SHEET (INCH)

EN






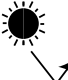




## TECHNICAL INFORMATIONS :

Material : Fiber High performance concrete  
 Weight : 88 LBS  
 General tolerance : +/- 0.12 in

|                      |      |        |  |
|----------------------|------|--------|--|
| <b>CONCRETE LCDA</b> |      |        | 8 rue Copernic 49240 Avrillé<br>www.concrete-beton.com |
| Date                 | Name | N°plan | Scale :<br>Ep :  |
|                      |      |        |  |
|                      |      |        | PANBETON ® BARBICAN<br>TERENCE WOODGATE                |
|                      |      |        | Agreement for production :                             |
| Surface :            |      |        |  |
| Units : in           |      |        |  |
| Weight : LBS         |      |        | SHEET 1 OF 1   |

Ce dessin est la propriété de la société LCDA. Toute reproduction sans notre accord préalable est interdite.  
This drawing is the property of LCDA. Reproduction without our permission is prohibited.

|   |                               |   |
|---|-------------------------------|---|
|    | <b>DIMENSIONS</b>             | 2600 x 900 mm   102.36" x 35.43"<br>(General tolerance +/- 3 mm   0.12")                              |
|    | <b>ORTHOGONALITY</b>          | + /- 1.0 %  |
|    | <b>SURFACE AREA</b>           | + /- 1.0 %  |
|    | <b>THICKNESS</b>              | 20 mm   0.79"   |
|    | <b>WEIGHT</b>                 | 50 Kg   110 lbs<br>(+/- 20 %)   |
|    | <b>WEIGHT PER SQM</b>         | 12 to 18 kg/m²   25 lbs to 30 lbs /m²   |
|    | <b>COMPOSITION</b>            | > Fibre-reinforced concrete<br>> Construction panel   |
|   | <b>SEALER TREATMENT</b>       | As an option<br>(water-borne acrylic base)  |
|  | <b>MOUNTING &amp; BONDING</b> | Glue<br>Hybrifix 550 DEN BRAVEN   |
|  | <b>SUBSTRATES</b>             | Is glued to all substrates<br>(plasterboard, bricks, breeze-blocks, etc.)                             |
|  | <b>CUTTING</b>                | Diamond blade (continuous-rim).<br>outer corner possible, drilling with<br>diamond-coated hole saw... |

|   |  |  |
|---|--|--|
|    | <b>FIRE CLASSIFICATION</b>                 | > Euroclass B-s1, d0<br><br>> [OPTION] A2-s1d0<br>(with specific support : gypsum fiber board)<br><br>> ASTM E84 :<br>Class A<br>Smoke index : 0<br>Flame spread index : 0 |
|    | <b>HEAT RESISTANCE</b>                     | Up to 60°C   Up to 140 °F  |
|    | <b>THERMAL SHOCK</b>                       | Resistant  |
|    | <b>LIGHT RESISTANCE</b>                    | No impact  |
|    | <b>VOC CLASSIFICATION</b>                  | A+   |
|   | <b>ACOUSTIC</b>                            | Neutral  |
|  | <b>EXCLUDED</b>                            | Exterior, floor, shower stall.<br>Not suitable for direct and<br>continuous contact with water.  |
|  | <b>SPECIFIC NOTES RELATED TO THE MODEL</b> | No pattern connection between<br>panels due to different reliefs.  |

USE THIS ENTIRE DESCRIPTION TO SPECIFY OUR PRODUCTS.

|                       |                           |  |
|-----------------------|---------------------------|--|
| <b>COMPANY NAME</b>   |                           | Concrete LCDA  |
| <b>TECHNICAL DATA</b> | <b>MORTAR</b>             | <p>Fibre-Reinforced shrinkage-compensating repair mortar.</p> <p>Non-shrinking mortar composed of sand, special cement, fibres and admixtures.</p> <p><b>Compressive strength:</b> Class R2<br/> <b>Chloride ion content:</b> <math>\leq 0.05\%</math><br/> <b>Bonding :</b> <math>\geq 0.8</math> MPa</p> |
|                       | <b>REINFORCED FIBRE</b>   | High Zirconia 17%+ Alkali Resistant Glass Fibre.   |
|                       | <b>CONSTRUCTION PANEL</b> | Rigid extruded polystyrene foam finished on both sides with a polymer-modified mortar facing, reinforced with a glassfibre mesh fabric.  |

## COMPOSITION

Slice view



10 MM | 0.39"      10 MM | 0.39"

FIBRE-REINFORCED CONCRETE      CONSTRUCTION PANEL



# FINISHES



Light Pitted



Medium Pitted

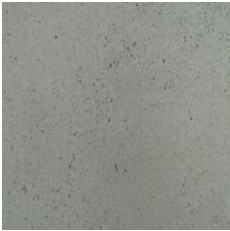


Heavy Pitted

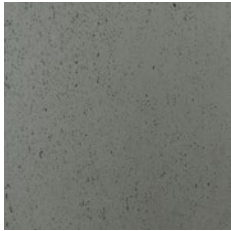
# COLORS



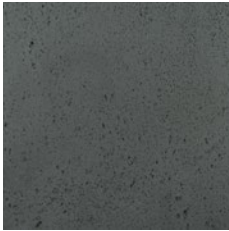
200 - Natural Grey



217 - Slate Grey



216 - Anthracite Grey



209 - Black



402 - White



404 - Stone



205 - Brown



269 - Luzerne



473 - Quarzazate

# CORNER CUTTING

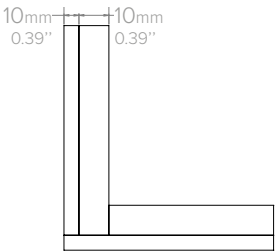
## 1 - BOARD TO BOARD JOIN



Front view



Top view

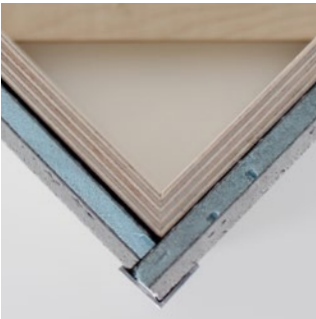


Schema

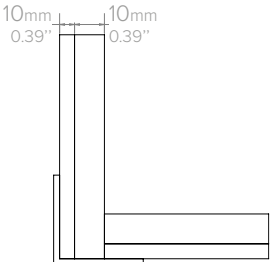
## 3 - TOP CORNER IRON



Front view

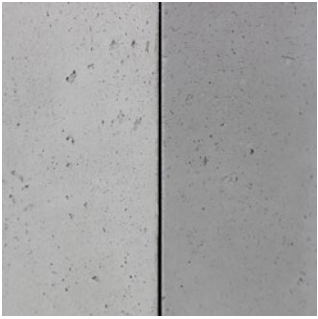


Top view

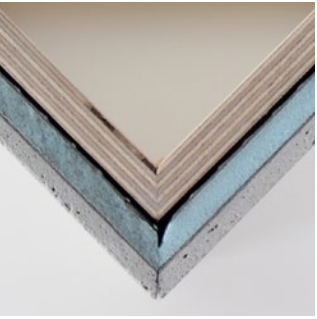


Schema

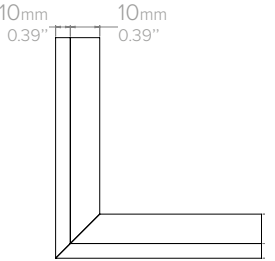
## 2 - OUTER CORNER\*



Front view



Top view

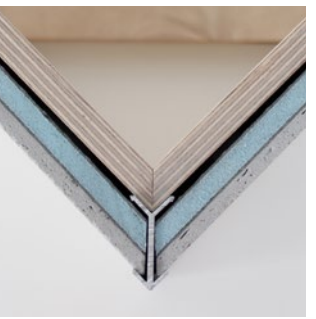


Schema

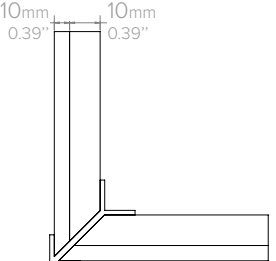
## 4 - IRON CORNER\*



Front view



Top view

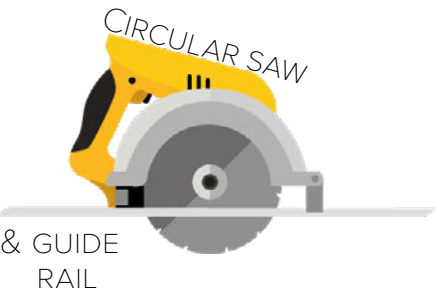
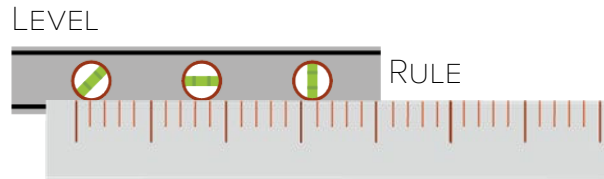
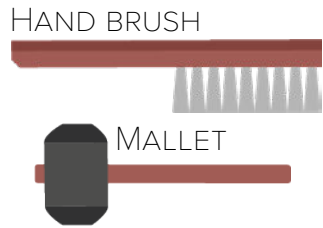


Schema

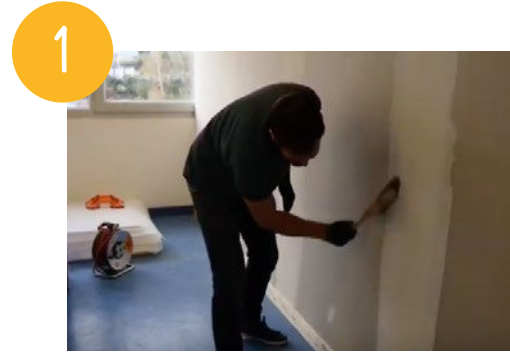
\*45 degree cuts can be made at the Concrete LCDA factory (as an option).



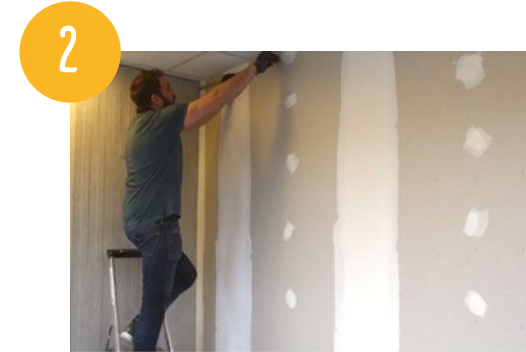
# INSTALLATION TOOLS



# INSTALLATION STEPS



CLEAN THE AREA BEFORE THE INSTALLATION



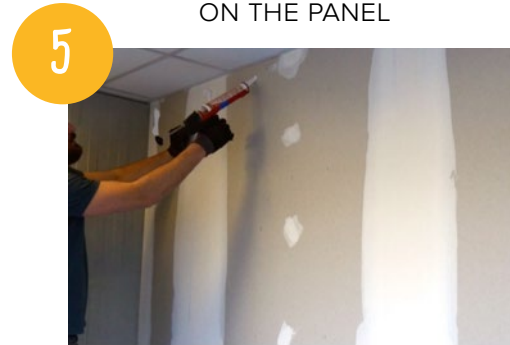
TAKE WALL MEASUREMENTS BEFORE CUTTING THE PANEL



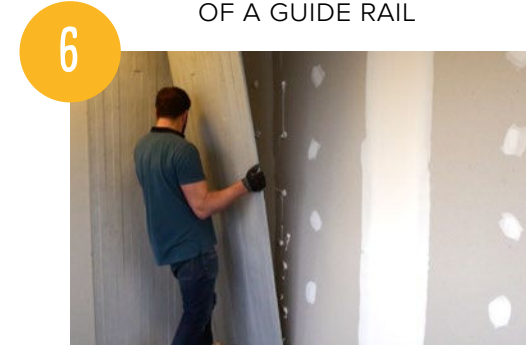
COPY YOUR MEASUREMENTS ON THE PANEL



CUTTING WITH THE USE OF A GUIDE RAIL



APPLY GLUE ON THE WALL (OR ON THE BACK OF THE PANEL)



PLACE THE PANEL STARTING WITH THE BOTTOM

INSTALLATION VIDÉOS STEP BY STEP TO SEE  
**ON OUR YOUTUBE CHANNEL @CONCRETE LCDA**

