



TECHNICAL DATA – ENGLISH

## PANBETON<sup>®</sup> MICA

DESIGN : SEBASTIAN HERKNER

DIMENSIONS : 2600 x 900 X 15 mm | 102.36" x 35.43" x 0.59"

---

### CONCRETE LCDA<sup>®</sup>

8 rue Copernic 49240 Avrillé - FRANCE

T. +33 (0) 2 41 33 99 10 F. +33 (0) 9 70 32 65 61

[CONTACT@CONCRETE-BETON.COM](mailto:CONTACT@CONCRETE-BETON.COM)

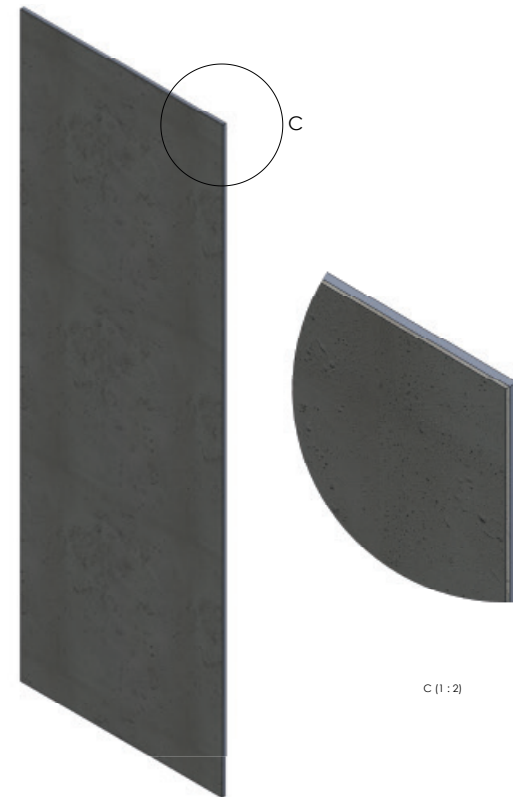
[WWW.CONCRETE-BETON.COM](http://WWW.CONCRETE-BETON.COM)

## PANBETON®

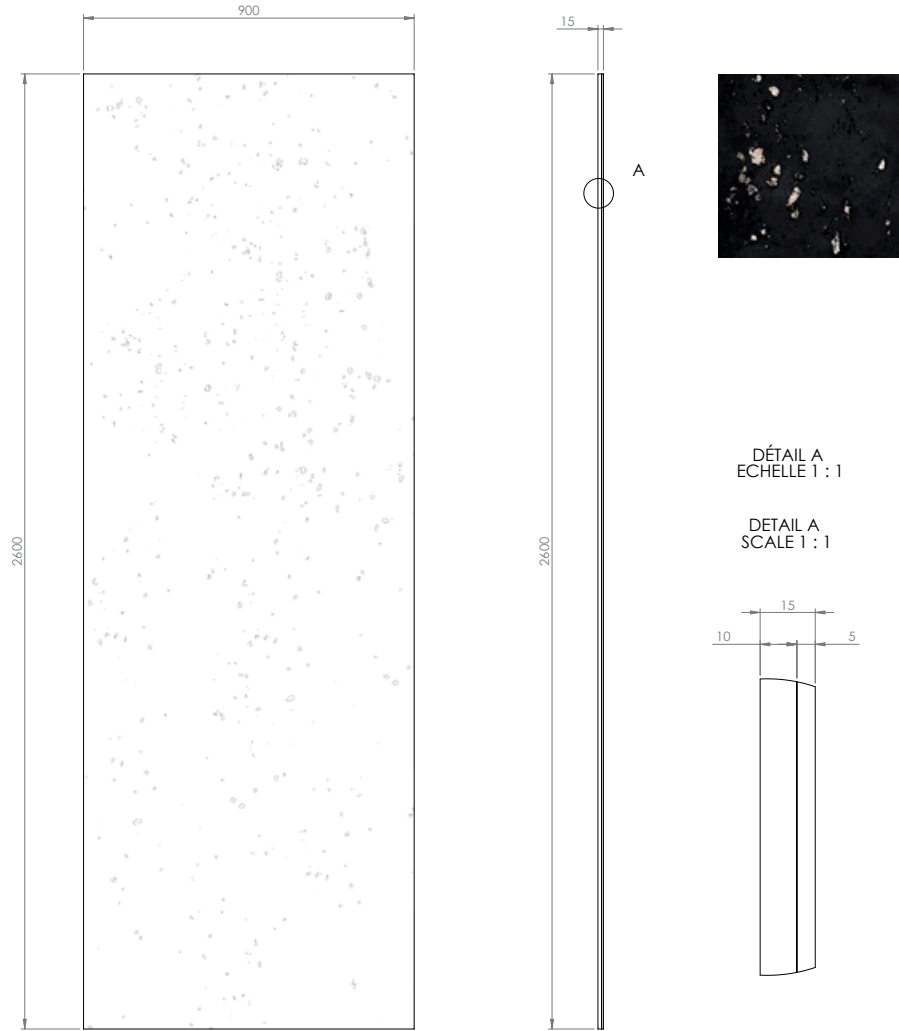
### ULTRA-LIGHTWEIGHT CONCRETE CLADDING

Panbeton® is a unique technology of ultra-lightweight concrete cladding. These slabs are quick and easy to install for wall and ceiling covering. It is the ideal covering to dress up a space with concrete.

- > A large lightweight and easy to cut slab.
- > Front made of genuine raw concrete
- > A simple attachment system
- > Quick installation with little handling
- > Endless customisation possibilities.



# TECHNICAL SHEET (MM)



## INFORMATIONS TECHNIQUES :

Matière : Béton fibré ultra haute performance

Poids : 30 Kg

Tolérance générale +/- 3 mm

Finition : Brut moyen obligatoire  
(pas de déclinaison en brut léger / brut fort)

## TECHNICAL INFORMATIONS :

Material : Fiber High performance concrete

Weight : 30 kg

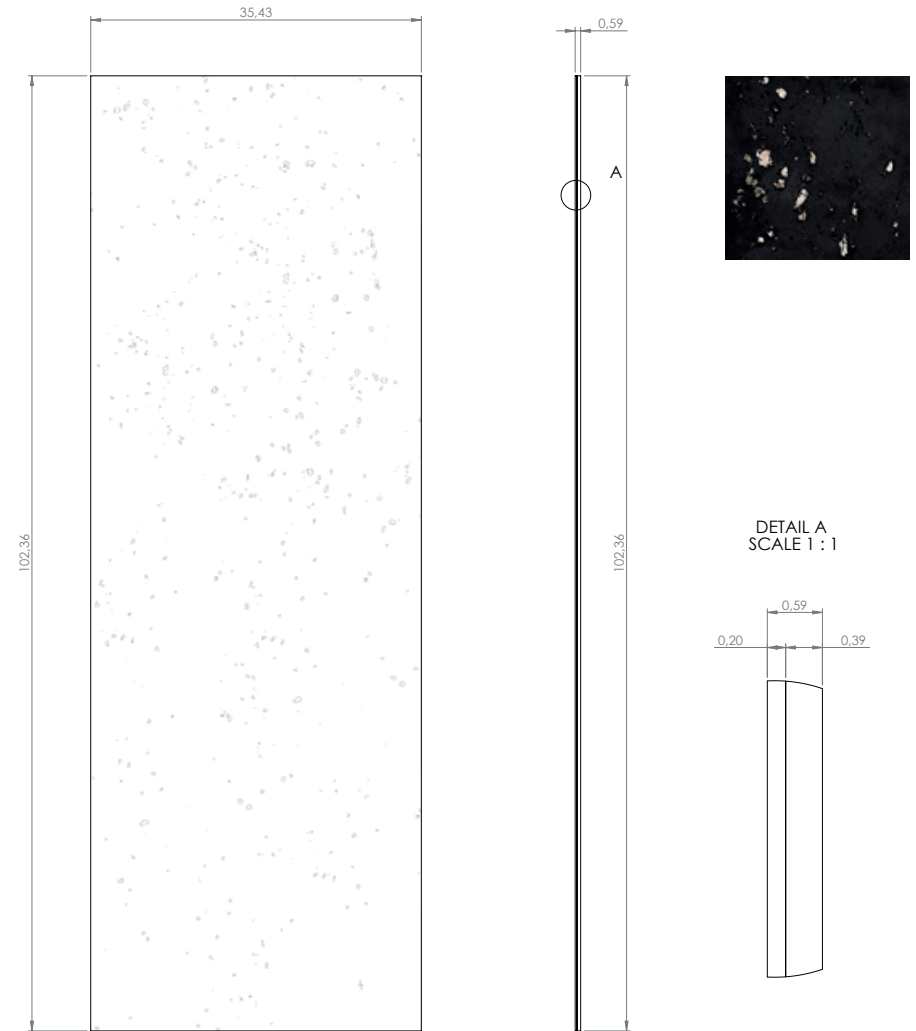
General tolerance : +/- 3 mm

Finish : Medium pitted mandatory  
(no declination in light pitted / heavy pitted)

<b>CONCRETE LCDA</b>			8 rue Copernic 49240 Avrillé www.concrete-beton.com
Date	Nom	N°plan	Echelle : Scale :
			Ep :
			PANBETON® MICA 2600 X 900 X 15mm SEBASTIAN HERKNER
Surface : m <sup>2</sup> Units : mm Units : mm			Bon pour accord : Agreement for production :
Poids : Kg Weight : kg			FEUILLE 1 SUR 1 SHEET 1 OF 1

# TECHNICAL SHEET (INCH)

EN



## TECHNICAL INFORMATIONS :

Material : Fiber High performance concrete

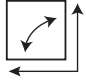
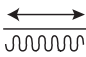





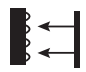

Weight : 66 LBS









General tolerance : +/- 0.12 in

Finish : Medium pitted mandatory  
(no declination in light pitted / heavy pitted)

<b>CONCRETE LCDA</b>			8 rue Copernic 49240 Avrillé www.concrete-beton.com
Date	Name	N°plan	Scale : Ep :
			PANBETON® MICA 102.36 x 35.43 x 0.59 in SEBASTIAN HERKNER
Surface : Units : in			Agreement for production :
Weight : LBS			SHEET 1 OF 1

Ce dessin est la propriété de la société LCDA. Toute reproduction sans notre accord préalable est interdite.  
This drawing is the property of LCDA. Reproduction without our permission is prohibited.

	<b>DIMENSIONS</b>	2600 x 900 mm   102.36" x 35.43" (General tolerance +/- 3 mm   0.12")
	<b>ORTHOGONALITY</b>	+ /- 1.0 %
	<b>SURFACE AREA</b>	+ /- 1.0 %
	<b>THICKNESS</b>	15 mm   0.59"
	<b>WEIGHT</b>	30 Kg   66 lbs (+/- 20 %)
	<b>WEIGHT PER SQM</b>	12 to 18 kg/m²   25 lbs to 30 lbs /m²
	<b>COMPOSITION</b>	> Fibre-reinforced concrete > Construction panel
	<b>SEALER TREATMENT</b>	As an option (water-borne acrylic base)
	<b>MOUNTING &amp; BONDING</b>	Glue Hybrifix 550 DEN BRAVEN
	<b>SUBSTRATES</b>	Is glued to all substrates (plasterboard, bricks, breeze-blocks, etc.)
	<b>CUTTING</b>	Diamond blade (continuous-rim). outer corner possible, drilling with diamond-coated hole saw...

	<b>FIRE CLASSIFICATION</b>	> Euroclass B-s1, d0  > [OPTION] A2-s1d0 (with specific support : gypsum fiber board)  > ASTM E84 : Class A Smoke index : 0 Flame spread index : 0
	<b>HEAT RESISTANCE</b>	Up to 60°C   Up to 140 °F
	<b>THERMAL SHOCK</b>	Resistant
	<b>LIGHT RESISTANCE</b>	No impact
	<b>VOC CLASSIFICATION</b>	A+
	<b>ACOUSTIC</b>	Neutral
	<b>EXCLUDED</b>	Exterior, floor, shower stall. Not suitable for direct and continuous contact with water.
	<b>SPECIFIC NOTES RELATED TO THE MODEL</b>	Artisanal production: each panel is unique. Inlays of natural stones are random and can be friable. MICA is available in standard colors and medium pitted only. <b>Warning, pitting is different from other Panbeton® models.</b>

USE THIS ENTIRE DESCRIPTION TO SPECIFY OUR PRODUCTS.

<b>COMPANY NAME</b>		Concrete LCDA
<b>TECHNICAL DATA</b>	<b>MORTAR</b>	<p>Fibre-Reinforced shrinkage-compensating repair mortal.</p> <p>Non-shrinking mortar composed of sand, special cement, fibres and admixtures.</p> <p><b>Compressive strength:</b> Class R2  <b>Chloride ion content:</b> <math>\leq 0.05\%</math>  <b>Bonding :</b> <math>\geq 0.8</math> MPa</p>
	<b>REINFORCED FIBRE</b>	High Zirconia 17%+ Alkali Resistant Glass Fibre.
	<b>CONSTRUCTION PANEL</b>	Rigid extruded polystyrene foam finished on both sides with a polymer-modified mortar facing, reinforced with a glassfibre mesh fabric.

## COMPOSITION

Slice view



5 MM | 0.19"

10 MM | 0.39"

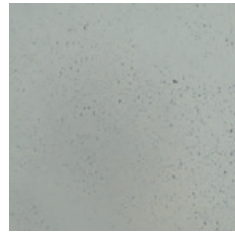
FIBRE-  
REINFORCED  
CONCRETE

CONSTRUCTION  
PANEL



## FINISHES\*

*\* Pitting is different from other Panbeton® models.*



Medium Pitted

## COLORS



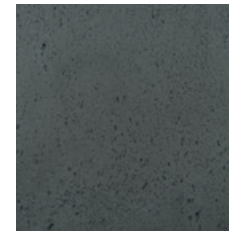
200 - Natural Grey



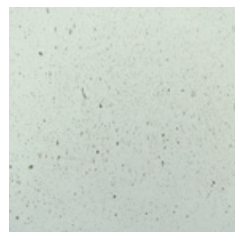
217 - Slate Grey



216 - Anthracite Grey



209 - Black



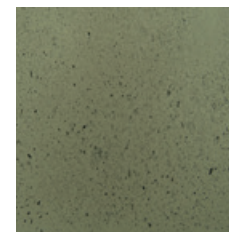
402 - White



404 - Stone



205 - Brown



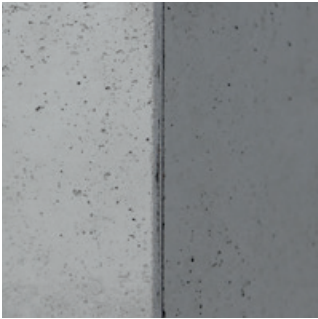
269 - Luzerne



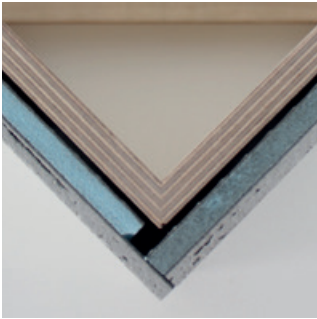
473 - Ouarzazate

# CORNER CUTTING

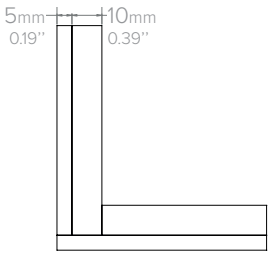
## 1 - BOARD TO BOARD JOIN



Front view



Top view

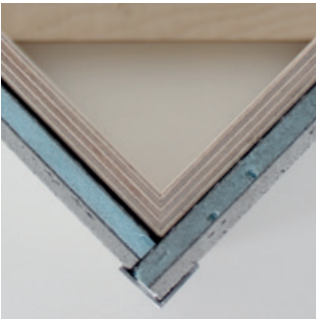


Schema

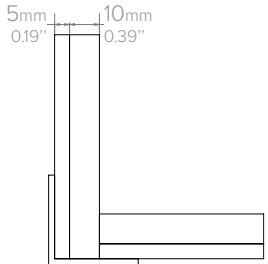
## 3 - TOP CORNER IRON



Front view

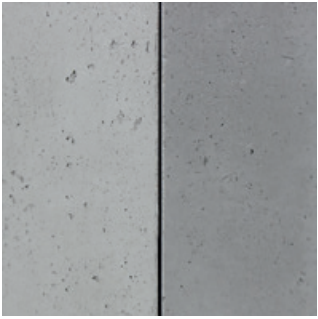


Top view

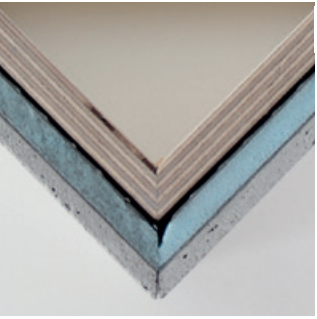


Schema

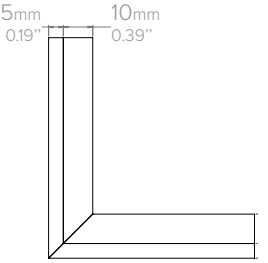
## 2 - OUTER CORNER\*



Front view

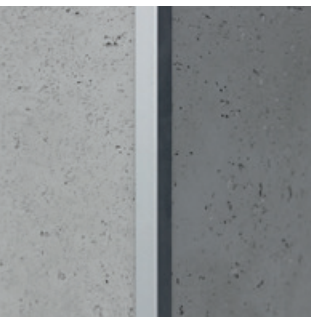


Top view

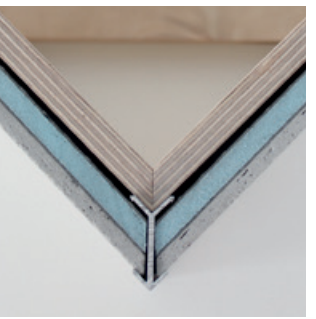


Schema

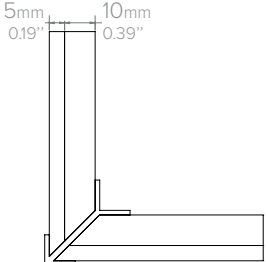
## 4 - IRON CORNER\*



Front view



Top view

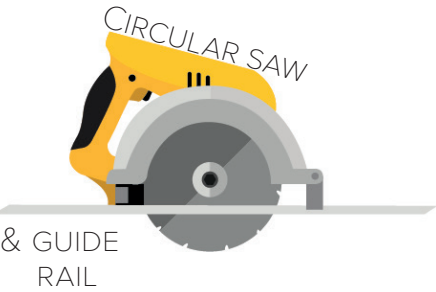
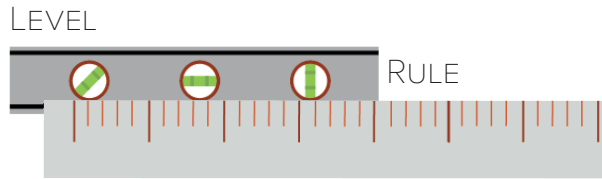
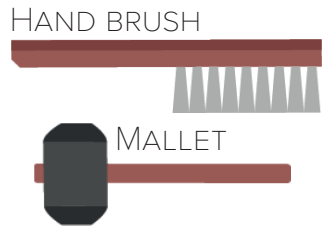


Schema

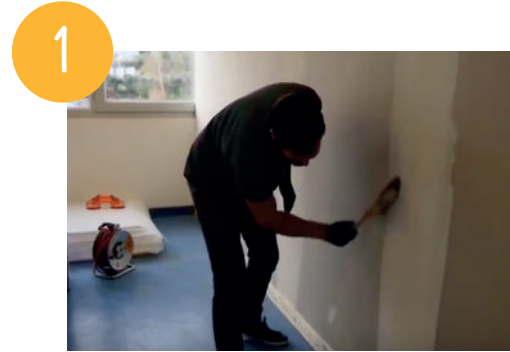
\*45 degree cuts can be made at the Concrete LCDA factory (as an option).



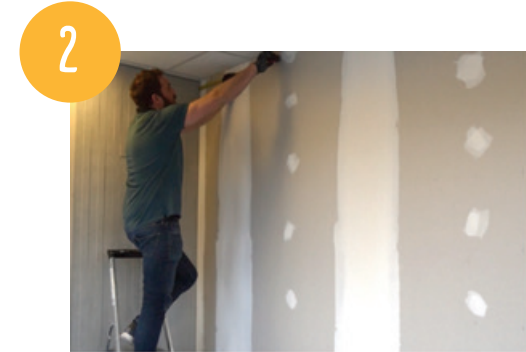
# INSTALLATION TOOLS



# INSTALLATION STEPS



CLEAN THE AREA BEFORE THE INSTALLATION



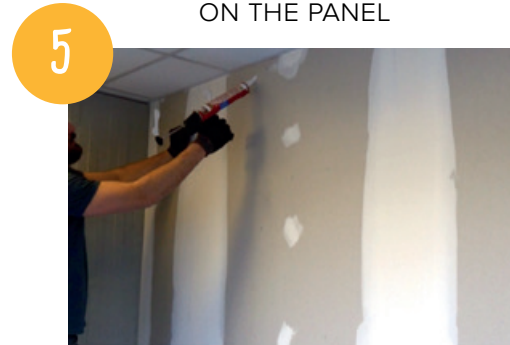
TAKE WALL MEASUREMENTS BEFORE CUTTING THE PANEL



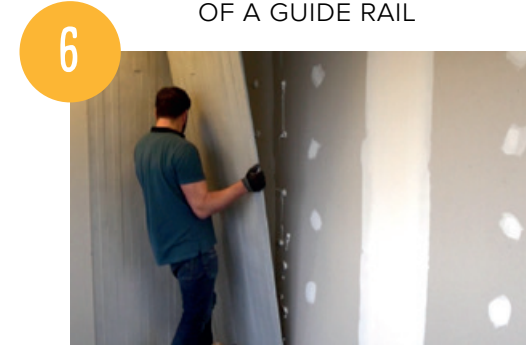
COPY YOUR MEASUREMENTS ON THE PANEL



CUTTING WITH THE USE OF A GUIDE RAIL



APPLY GLUE ON THE WALL (OR ON THE BACK OF THE PANEL)



PLACE THE PANEL STARTING WITH THE BOTTOM

INSTALLATION VIDÉOS STEP BY STEP TO SEE  
**ON OUR YOUTUBE CHANNEL @CONCRETE LCDA**

